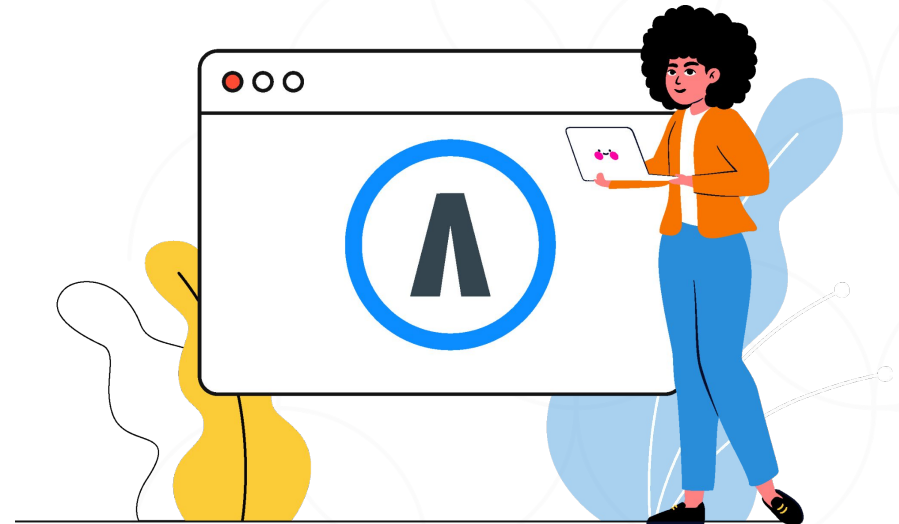


# Do more with your affiliate data using Affluent's API

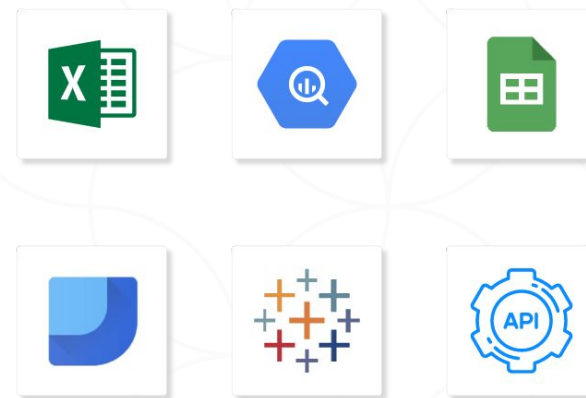
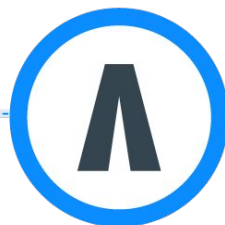
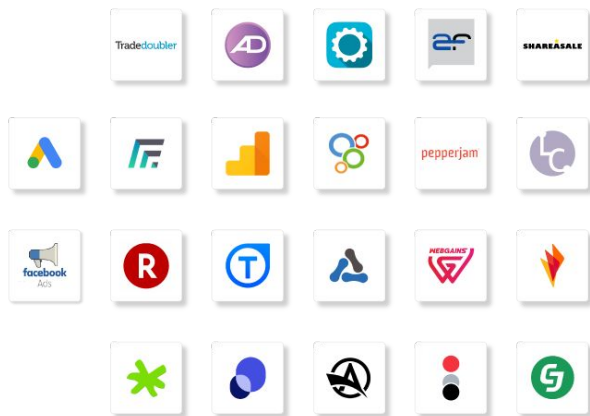
Affiliate is a high-revenue generating channel, but it's often excluded from multichannel reporting and needs to get the recognition it deserves. Disparate and disconnected data sources make working with affiliate data difficult. With the Affluent API you can access all your affiliate data from different networks and programs, in a standardized format, from a single source. Now you can:

- Include affiliate data in multichannel reporting
- Pipe affiliate data into advanced visualization tools
- Update clients with specific reporting requirements
- Gain deeper analysis and create proprietary technology




---

**Built by affiliate marketing API specialists, Affluent's API is the perfect tool to aid data reporting and aggregation.**



### Quick setup and easy to use

There's no need to fight for prioritization with your development team. Use the Affluent API to include affiliate data with your multi-channel reporting and avoid time-intensive development work.

### Designed specifically for affiliate data

It's built by a team of affiliate marketing API experts who know how to account for lock-in dates, publisher bonuses — and all the quirks of the affiliate industry.

### Standardized data across all networks

Affluent uses the same language for all affiliate platforms, which means you can make real comparisons and gain smarter insights.

### Transaction level insights

Get down to the nitty-gritty with the "Actions" endpoint. Track every click, lead, order, or sign-up in one place.

### Zero maintenance

The Affluent team monitors network APIs for any errors, updates, and upgrades. Sleep well knowing you'll never miss out on a new data point again.

### A single API with no network limitations

Work with clients on any network without building new integrations — and with a single API, you can eliminate integration maintenance.

Want to integrate your affiliate data into your agency's multichannel reporting? Contact [hello@affluent.io](mailto:hello@affluent.io) to learn more.

[www.impact.com](http://www.impact.com)

Request a demo