



Migrating your affiliate or partnerships program to impact.com happens in 3 easy-to-follow steps. The impact.com team works with you throughout the migration process which can be completed within 6-8 weeks. Here's what to expect.

Meet impact.com's migration team

You're not in this alone. impact.com's committed team guides you step-by-step.

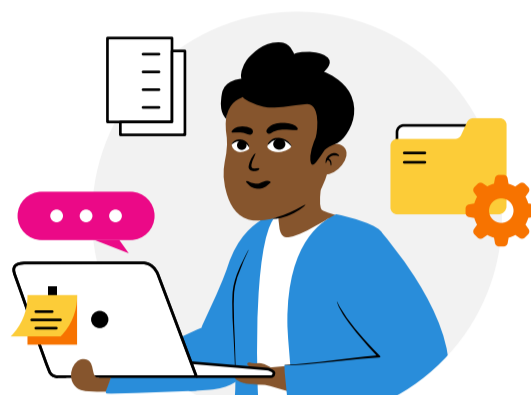


Client affiliate manager or partner manager

The marketer works with the migration specialist to manage partner migration from your previous platform or network to impact.com.

Agency account or project manager

If you're part of an agency, the representative manages the partner migration.

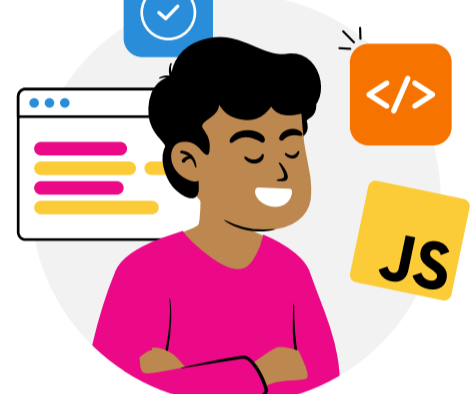
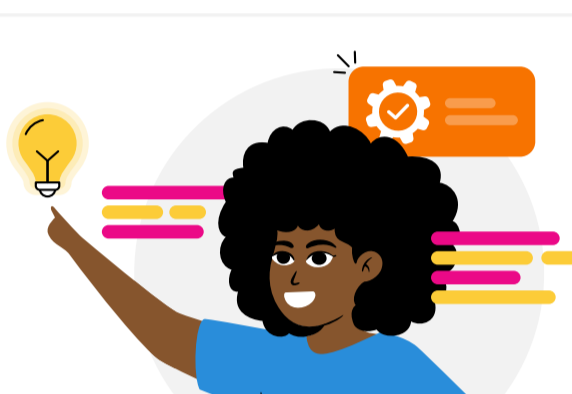


impact.com's onboarding project manager

This team member sets up your program on impact.com—from tracking to product catalogs and contracts.

impact.com's technical services solution engineer

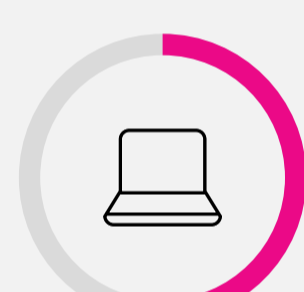
They work directly with the client's tech team, ensuring that all of the technical aspects of the integration run flawlessly.



Client web developer or technical contact

Responsible for placing Javascript across the client's site, assisting with data transfers, testing integrations, and ensuring timely completion.

The timeline [3 easy steps over 6-8 weeks]



STEP 1:

Account setup

A dedicated onboarding project manager works with the client to configure the account settings.



[Tip: Prepare your contracts, including contracts and product catalogs, for an easy setup.]



STEP 2:

Technical account integration

impact.com's technical service solution engineer works with the client's web developer to test technical aspects and parameters.



[Tip: Give your top partners notice of the migration so they can prioritize any dev work.]



STEP 3:

Partner migration

The client affiliate manager informs their partners about the upcoming migration. impact.com's partner migration specialist also checks in and provides support.



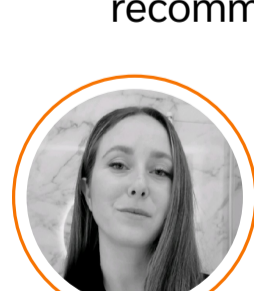
[Tip: Migrate one group of partners at a time. impact.com ensures that credits for conversions are only attributed to one marketing channel while both platforms are active.]

Don't have time to manage the migration process? impact.com can help.

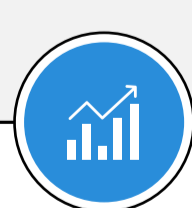
Leave the heavy lifting to our team of migration experts and have your program up and running within 4-6 weeks with a customized migration plan. Contact sales@impact.com to learn more.



Moving to impact.com's platform has been a game-changer for us. We customized our whole influencer marketing structure like never before, and I've rarely seen a customer support and experience team this effective. They assist us with our daily tasks when needed and bring great recommendations for our program.



Morgane Kaminski
Social Commerce Performance Lead,
[Mapiful](#)



12x

partnership revenue growth



13x

new partners onboarded in the first year



3x

more conversions from product exchanges

Ready... set... migrate!

Migrating your partnerships program can be intimidating at first, but it doesn't have to be hard. With impact.com, you have a dedicated expert team helping you with every step, from account setup to campaign launching.

